

OVERVIEW

Since the early 2000s, the Hunter Development Corporation (HDC) and its predecessor, the Regional Land Management Corporation, has been the state's agent responsible for carrying out important remediation activities across former BHP landholdings around the Port of Newcastle at the former Steelworks site at Mayfield and its associated Waste Emplacement Facility at Kooragang Island. HDC has methodically completed complex, large scale remediation works progressively, with accompanying monitoring and verification programs to ensure adherence to environmental standards. This important work will ensure the sites are fit for re-use in the future to support the regional economy.



MAYFIELD FORMER BHPB SITE: REMEDIAITON AND INFRASTRUCTURE STAGING PLAN

BACKGROUND INFORMATION

Following the closure of the former BHP Steelworks in 1999, environmental authorities determined the site presented a significant risk of harm to human health and the environment.

The site was declared a Contaminated Site under the *Contaminated Land Management Act 1997* (CLM) and a Voluntary Remediation Agreement (VRA) was entered into.

HDC is the State's agent to coordinate the remediation works on behalf of the State.

PLANNING APPROVALS

Planning approval is current for the demolition of the steelmaking infrastructure, remediation activities and the new freight rail line onto the site.

Future developments on the site are subject to future planning approvals under the framework of the long term lease of the Portside Lands.

COMPLETED REMEDIATION

Remediation work completed includes:

Stage 1

Completed in mid-2008, Stage 1 captured the great majority of the contamination risks located in Area 1 (30 hectares) involving:

- An underground 'barrier wall' to three sides of Area 1 up to 49m deep and 1.5km long, reducing groundwater flow to the river.
- Low permeability capping, reducing infiltration of rainwater.
- New major stormwater drains to east and west ends.
- Demolition and land forming

Monitoring and reporting has been undertaken for environmental authorities.



STAGE 1: DIAGRAM OF AREA 1 and BARRIER WALL IMPACT
(Stage 1 shown in red shading)

Stage 2

Completed Stage 2 work covering 60 hectares of portside lands, involved the provision of low permeability capping, land shaping and surface drainage. More than 200,000 tonnes of waste concrete and steel were recycled. By early 2014 HDC had completed remediating the 90 hectare portside portion of the site.

Intermodal Remediation

Remediation of the 10 hectare Intermodal zone was completed in mid-2016. The work involved installation of capping requiring major civil works, land forming, stormwater features and a range of environmental management activities.

The Intermodal footprint is part of the new Port lease, and HDC is implementing the remaining obligations in this area on behalf of the State.

New Freight Rail Line

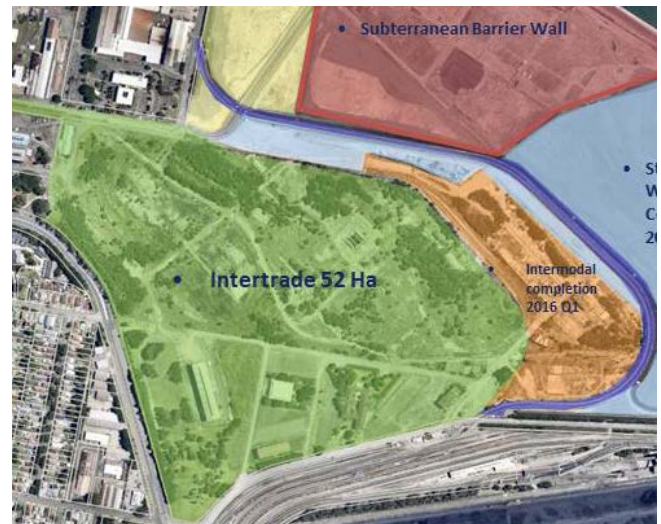
A new 1.7km freight rail line was completed in October 2011.

The rail line provides vital connectivity for the ongoing operation of industry as well as the future operations of the portside lands, and should benefit the ultimate development of the Intermodal and Intertrade areas.

FINAL STAGE

Intertrade Remediation

HDC has completed the design and will be awarding a contract for the remediation works on the remaining 52 hectares of the site known as Intertrade.



Intertrade Lands in green

The Intertrade remediation involves capping works, major civil works, land forming and drainage. The works will be delivered using a range of construction packages, with work being progressively implemented.

The Intertrade site does not form part of the Port lease area. Completion of HDC's remediation activities will include a repeal of the declaration of the land being a "significant risk of harm" and the site will then be considered fit for reuse.

Environmental controls and monitoring are put in place to assist in the management of impacts to the community and environment including the monitoring of air quality, noise and dust levels during major remediation activities. A Community Consultative Committee (CCC) has provided opportunity for two way communication and feedback.

HDC aims to complete the bulk of remediation works on the Intertrade site by mid-2017.